

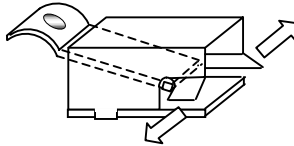
## REPLACING WORN 0-4-0 / 4-4-0 SIDE COLLECTOR SHOES

Fortunately it is still possible to obtain replacement collector shoes for our treasured 14V a.c. locos and the centre shoes are easily changed by undoing the countersunk screw which secures the retaining channel. The side shoes are of the same type but the complete assembly is unavailable, so existing ones must be re-shoed. Do not fall into the trap of trying to remove the shoe channel from the mounting bracket. It is not necessary and it is not easy to reassemble without distortion or damage to the insulating card. When replacing shoes, always inspect the leaf spring and adjust if necessary. The tension should be just sufficient to lift the shoe through its full travel within the cover channel. Undue pressure contributes to excessive wear and loss of traction. The sequence of diagrams below shows how it should be done.

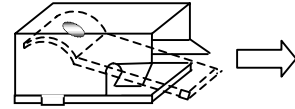
Note that the method is equally valid for Cadet or Junior Train battery locos and for the shoes employed on the Lighted Brake Van.



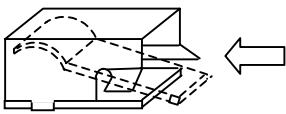
1. Worn shoe assembly



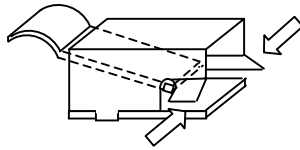
2. Bend cover out



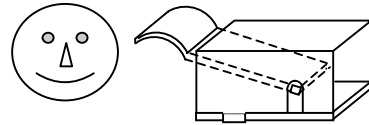
3. Remove old shoe



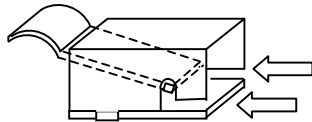
4. Insert new shoe



5. Bend cover back in



6. Rebuilt shoe assembly!



Note: Some late shoes have a slot to the rear of the shoe pivot pins. In this case it is not necessary to bend the cover to remove or replace the shoe. The earlier covers can be modified in the same way if frequent shoe changes are anticipated.