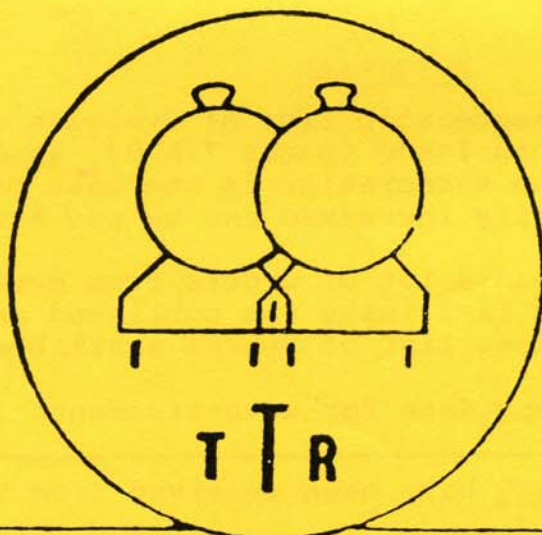
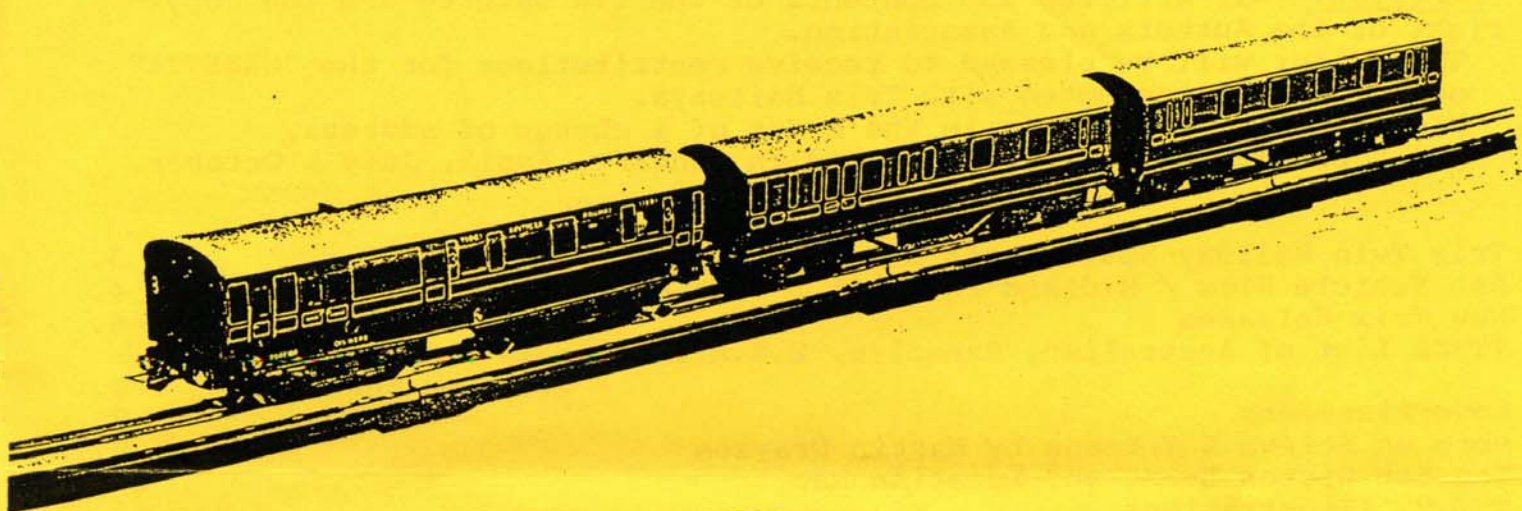


The TTR Gazette

(No. 43/86).



Collectors' Association

THE T.T.R. GAZETTE

The Journal of the T.T.R. Collectors Association.
Founded by Allan Hinchliffe and Stewart Bean.

Hon.President..Mr E.L.Rozsa,(formerly of Trix now of Liliput Model
Railways (UK) Ltd.)
Hon.Member..Mr J.Catalani,(formerly Development,Design Engineer,Trix Ltd.)

The TTRCA is a non-profit making organisation devoted to the collecting
and operating of T.T.R. '00' gauge trains 1935 - 1971.

Secretary - S.A.Bean, ,Walton,PETERBOROUGH. Tel
Treasurer - Allan Hinchliffe,(,Birkby,HUDDESFIELD.

Editor - D.Baker, ,GILLINGHAM,Kent. Tel:
Representative for Canada

Alan Markham, ,Scarboro,Ont.,CANADA.

Representative for Australia and New Zealand
David Mewes, ,Harkaway,Victoria,AUSTRALIA 3806.

"COPYRIGHT" All articles and contents of the TTR Gazette are the copy-
right of the Authors and Association.

The Editor will be pleased to receive contributions for the "GAZETTE"
on any matter connected with Trix Railways.

Please notify the Editor in the event of a change of address.

The "GAZETTE" is usually published in January, April, July & October.

CONTENTS No.43 SPRING 1986.

Trix Twin Railway Spare Parts & Booklets, etc..	3.
Ash Vehicle Kits / Midland Festival / Vintage Train Exhibition	4.
New Trix Releases	5-6.
TTRCA List of Australian, Canadian, U.S.A., European Members and U.K. New Members	7-8.
Advertisements	8.
More on Screws & Threads by Martin Drayson	9.
The 5th Kirton Event and Location Map	10.
T.T.R. Illustrations	11-12.

EDITORIAL

As promised, the TTRCA membership list of Overseas and European
members are included in this issue (pages 7 & 8), also the new U.K.
members who have joined the Association in the last few months.

The membership has steadily increased and we now have around 235
in the Association.

Allan tells me that he had a lot of orders from members wanting
Trix Spare Parts after the last issue was published and some items
have sold out. For the latest list of Spares available see page 3
in this issue.

Next issue July 1986. Copy date for advertisements 30th June.

CHANGES OF ADDRESS have been received from the following
members-:

D. Bell, LELANT, Nr.St.Ives, Cornwall.
G.P.Eldred, CLACTON-ON-SEA, Essex.
P.J.Moore, STROUD, Glos.

1936 - GOLDEN JUBILEE OF THE BRITISH TRIX TWIN RAILWAY - 1986

To celebrate this event, the Vintage Toy & Train Museum on the first
floor in Field's Dept. Store, Market Place, Sidmouth, Devon, is dis-
playing one of the first British made sets introduced from 1936 on-
wards in Gauge HO 1/80 scale together with other pre-war items of
rolling stock etc.

It consists of a 0-4-0 LMS tank locomotive, 2 4-wheel suburban coaches
and a passenger guard's van all in the correct LMS livery of the period
together with an oval of 3-rail bakelite track, controller, plugs and a
bottle of Shell oil. The original price was 37/6 (£1.87½).

David Salisbury (member 363).

NEW SPARE PARTS:

LOCO WEIGHTS IN CAST METAL FOR 0-4-0 LOCOS £1.50 ea.
 BULBS - 14volt,65mA L.E.S. £1 for 4 - suitable for scale coaches, lighted Goods Brake Vans, Yard Lamps, Lighted American outline locos and Signals.

Standard Collector Shoes £1.40 for 4.
 Tender type Collector Shoes £1.00 pair.
 Retaining Channels for collector shoes £1.00 each.
 Loco Buffers for TTR AC & DC locos 60p for 4
 Reduction gear "screws", specially made 50p ea.
 Contact Shaft Retainers, Brass 'd' shape 60p ea.
 Carbon Brushes for AC locos 50p pair.
 Pre-war type Cast Couplings £4.00 per pkt of 40.
 Pre-war type Wire Hooks £2.40 per pkt of 20.
 Brass connection Pins for "Meteor" 50p pair.
 Trix/Liliput 2-rail coach bogies with wheels and couplings £1.50 pair.

Pre-war type Tension Springs 20p for 5
 Screws for 0-4-0 cab end beam 25p for 4
 Manyways Station Filler Panels (Plain) 20p pair.
 Miniature Posters suitable for above (in colour) 30p pkt.

Carbon Brushes for DC locos Britannia, Class 5, etc. 40p pair.

Trix/LNER Gresley Card Coach Kits (1st class or 3rd class) £2.00 each.

The above coaches are suitable for 2-rail or 3-rail bogies.

Nylon Bushes 3mm still available £1 per 10 Bushes but 2.5mm sold out but more on order.

Nylon Reduction Gears - sold out as are Loco weight springs.

TTR Rail Clamps are back in stock again thanks to Martin Drayson and Tony Matthewman who have supplied another batch. 60p per 25

TRIX Association Ties with attractive TTR Motif in Gold £3.30 each.

Miniature Posters suitable for '0' gauge (in colour) 20p.

WHEEL PULLER FOR A.C. LOCO CHASSIS.

David Wills, known to many members in the South East, has produced a special puller suitable for removing 22mm wheels from 14v.AC loco chassis. It is simple to use once the side frame and commutator have been taken off. Care is required with some early post-war locos with "staked-on" wheels. These are often so tight that the puller could be damaged. In such cases more dramatic methods are needed! Members can order this useful tool direct from David at GRAVESEND, KENT. enclosing a cheque or P.O. for £3 plus 30p postage.

TRIX ASSOCIATION BOOKLETS.

TTR 1937 reproduction booklet on Manyways Stations. £1.30 pos 8. fpees.

TTR 1939-40 " Catalogue £1.50 " "

TTR 1935-1985 Northampton booklet £1.00 " "

TTR 1959 reproduction booklet shows Britannia, Class 5, etc. £1.50 " "

The NEW TRIX Catalogues 1964 and 1970/1 (not 1960/1 as shown in last Gazette) have all been sold.

I had many enquiries for the 1960 Catalogue. I will obtain a price for photo-copying some but it may be expensive due to the large size of the Catalogue which is a non-standard size these days for photo-copying machines.

All the above Spares and Booklets (except the Wheel Puller) are available from Allan Hinchliffe, 61 George Ave, Birkby, Huddersfield. For postage a S.A.E. is usually sufficient but please add extra postage for heavier items such as cast couplings and loco weights. Overseas members please add extra as even small items can cost a £1 to send. Items are usually sent within 10 days.

WORKING LAYOUTS AT OUR OWN TRIX GET-TOGETHERS.

It has been brought to my notice that our members who put on "working layouts" such as Peter Moore, Brian Arnold, Martin Drayson, Chris Thornburn should at least have a nominal sum say £5 towards their expenses. At least it would be a small reward for their efforts which mean an early start and then having to set-up the layout hopefully before a 10am opening such as at our own Hillmorton and Gloucester Events.

What do members think about this?

Allan Hinchliffe.

Following the letters in the last Gazette, a number of members have sent in their subs, these are due in October.

The subs are £5 per year in addition members can donate £1 towards the spares fund or association funds if they so wish.

From time to time a number of members include a donation to the Association, recently members so doing included Arthur MacGuiness (Dartford), Brian Walker (Andover), David Sailsbury (Sidmouth), Tony Matthewman (I.O.M.), David Johnson (Birmingham), Franz Nowack (Eichenan), Martin Drayson (Rayleigh) and our editor Denis Baker.

PRIVATE OWNER WAGONS.

The Art work is now being prepared for the above wagons.

MORE ON BOOKS by Allan Hinchliffe.

Our member Jeremy O'Keeffe mentions that Salamander books "Toy Trains" illustrate various Trix Twin items I looked at the book last year which includes a photo of LMS coaches in poor condition which surely should never be included in this condition. Other Trix Twin rolling stock are illustrated in "Metal Toys" also by Salamander.

THE ASSOCIATION would like to thank -

Jan Schniebel, Franz Nowack, Jeremy O'Keeffe who have sent in items for the Gazette, reproduced with Acknowledgement to Trix Mangold, Model Railway News, Argus Publications, Hobbies Annual for the illustrations which have been prepared by Allan Hinchliffe. Another drawing by Chris Kelley is included in this issue.

The new Trix coaches shown in this issue are the last word in excellence, a collectors item in themselves. Regarding the illustration of the Bassett-Lowke Terminal Station made for Trix it is not known if it was on general sale to the public, can any of our members comment?

THE MIDLANDS FESTIVAL OF MODEL RAILWAYS by

Allan Hinchliffe.

Our Trix stand at the University attracted a constant stream of onlookers., 13th to 16th March. The Trix Twin Railway layout was the work of our Birmingham member Chris Thornburn who was assisted by various local members.

There was also a display of modern Trix and Liliput 2-rail locos by Stewart Bean who included many of his favourite A4 locos.

Our member Micheal Foster was in attendance on the Hornby '0' gauge layout of John Pentney at which some of the early Meccano Constructor Cars and Aircraft "took the eye". The Birmingham Model Tramway Group had a fine street scene of working trams (24 volts DC) showing early Birmingham and the more modern type of Llandudno and Blackpool cars.

"GET-TOGETHER" AT SHIPTON VILLAGE, YORK.

On Saturday 28th June, at the Community Centre Shipton, 5 miles north of York on the A19, we will be having our 3rd Annual "Get-together" for Trix and Hornby members.

Jules Pidd will again be exhibiting his fine collection of Trix locos and stock, and in charge of the TTR layout. Please bring something along to show and run to allow Jules locos time to cool off!!

Joking apart, he does have some really lovely items in perfect condition too.

There will be a number of sales stalls around the hall at £3 each on a first come first served basis, so if you are interested ring me now.

The event is to be in aid of the local village church so please support us.

On the Hornby side, Keith Ward will be running his clockwork layout, and Ian Mackay from Newcastle an electric set-up, both '0' gauge. Pete Roberts will be running his superb Hornby '00' collection.

Barbara Ward will be in the kitchen dept, so there's no need to bring sandwiches as the foods at almost pre-war prices! Hot meals are available at our local ask John Ridley!!

For further information contact - Dave Norville, Shipton, York. Tel:

MODEL RAILWAY ACCESSORIES
ASH VEHICLE KITS - c.1958.

At the Trix Association meeting in September 1985 at Hillmorton, Rugby, TTRCA member Peter Moore from Gloucester drew my attention to some wooden 4mm scale road vehicles on his display layout, which had been built from kits. The finish achieved by Peter was first class, but to those of us privileged to have seen his restoration paintwork on Trix locomotives, this was to be expected. Peter had found the kits tucked away at the back of a shelf in a shop at Wells, Somerset earlier in 1985. The shop owner could not recall where the kits came from, or when. Peter had retained some of the kits in the original packaging and with the instruction sheets which open to 16" square giving attractive exploded diagrams plus, of course, comprehensive instructions.

The content of the kits is extensive, including even glue and sandpaper, although paintwork is left to the constructor. Even the wheels are of turned wood, although card is used for some parts such as mudguards.

In the terms of 1958, the kits were obviously good quality but presumably were soon overtaken by the development of plastics giving better detail on the models made from this material.

Peter had no surplus kits, and so I wrote to the Ash Models address on the boxes, not really expecting to get more than a "not known" return from the local post office. However, within a few days I received a most pleasant letter from Mrs Ash explaining that although the business had been discontinued many years ago because of a deterioration in Mr Ash's health, they still lived in the same locality and yes, indeed, there was a quantity of the kits left in their loft. An original Ash price list was enclosed, from the late 1950's, which referred to the use of the kits with "Trix, Tri-ang, Dublo, etc.etc."

A slight detour of a business journey took me to see Mr and Mrs Ash, now in their 70's, with Mr Ash most regrettably restricted in his movements due to earlier illness.

After a pleasant interlude of reminiscences I left with 20 of the kits and a box of 'accessories' - some made by Ash and some by Mastermodels (B.J.Ward) which had been available as back up to the kits.

Paperwork included Ash price lists & illustrated folders together with Master Models and Wilson price lists, and correspondence with B.J.Ward Ltd. There were also letters to the advertising department of MRN and Model Engineer dated 1958. The illustrated leaflets show photographs of the complete range of 30 models.

The 20 kits were snapped up by TCS members at a Luton meeting, but further negotiations with Mrs Ash now allow all the remaining stock to be offered for sale. Some of the kits are few in number, and these are being offered to TCS & TTRCA members only, through this article and a similar one in their newsletter until May 17th. Other more numerous variants are on general sale now.

An original Ash price list and instruction sheet are being supplied to each member, with compliments. There are separate instruction sheets for single decker buses, double decker buses and lorries. Some 20 different kits are available and include 1 or more variants of:- AV, HS, HV, L, LBT, LL, PT, RV, single decker bus and double decker bus, plus the Ash & Master Models accessories. Note that all lorries use the same preshaped cab, but AV & LL are articulated. The cab is not used in either of the buses. (For an explanation of the descriptive code letters, please see the price list or instruction sheet). An S.A.E. to Ian Paterson, 3 Avenue Vivion, Scunthorpe DN15 8JE will provide full details of availability and prices now applicable.

The condition of the kits is generally good, although slight rusting of the packaging staples has occurred.

The paperwork shows that the original prices increased between the issue of the illustrated folder and the simple price list, although an alternative, but very similar, version of the illustrated list, under the name of Atlantic Models, 335 Bradford St, Birmingham 5 - "Sole Wholesale Distributors to the Trade", also carries the higher prices. Both versions of the illustrated folder also offer the kits "ready made, unpainted, at double the kit prices, Painted 2/6 extra", but this service is not mentioned in the (presumably) later simple price list. The instruction sheets also give prices and these seem to be the lower ones in all instances. Perhaps the Later List and the wholesale List

were never in fact issued.

I hope that these kits will soon add contemporary road vehicle models to many layouts, even if it is 25 years later than intended. I would be interested to receive any further information which members can contribute on Ash Models, and on Wilson Lorry Kits. If anyone has Wilson Kits for sale-made or unmade - perhaps they would contact me.

Ian Paterson.

MIDLANDS FESTIVAL OF MODEL RAILWAYS.

This event took place in the imposing and dignified setting of Birmingham University's Great Hall, from March 13th - 16th 1986. It was announced in the TTRCA Gazette in November, and as I live locally, and had operated publicly at Gloucester last October (my first-ever - thanks to Dave Berry for the kind write up!), I felt I could hardly refuse to represent the Association this time.

A circular to twenty West Midlands members (the list of names and addresses in the current Gazette was a blessing) produced eleven replies: some regretted they couldn't help, but fortunately there were enough to cover all four days. I would like to thank Don Crocker, David Evans and his two junior assistant operators, David Eve, Bob Haynes, Don Holder, David Johnson, and Terry Staines, with Stewart Bean and Allan Hinchliffe from farther afield, for help with setting-up, operating, talking to people, and just being there; I am most grateful.

The space and tables provided allowed a double-track AC layout 6'x 5'6" with locoshed, goods yard, and carriage sidings, leaving room for static items and Association publicity at one side. Usually two trains were running at once, one on each track (what else with the Twin system?). My timesheets show a total of some 61 loco-hours, provided by 18 locos plus three Visiting Engines whom I was pleased to welcome, the biggest contribution being 7½ hrs from LNER goods 3451. There were no major hitches, but I did have a little trouble with reversing gear sticking (is there a guaranteed cure, I wonder...?), and one or two locos shorting on points, for reasons not yet clear.

Public reaction seemed generally favourable, so far as I could tell from the back of the layout. Two common reactions were "I've never seen that before" and "I remember when I had one of those"; and several people asked about the Association. Two simple things provoked interest, carriage interior lighting and a display of the insides of an "AC" locomotive. Altogether it was an interesting and, I think, successful time, but I found four days rather tiring - two together would have been enough.

C.C. Thornburn. March 1986.

REPORT ON VINTAGE TRAIN EXHIBITION IN BILLERICAY

The event took place on April 5th, a cold but bright Saturday. Eight working layouts were displayed representing '0' and '00' gauges. TTR layouts were operated by Dixon Upcott and Martin Drayson. The two Hornby Dublo layouts included a neat scenic one operated by Bill Bourne's son Christopher. Hornby '0' gauge clockwork was run by Chris and Theresa Webster from the Shoeburyness MRC (very seldom seen at shows due to all the winding-up needed). '0' gauge electric included a Hornby and two excellent Lionel layouts. Bill had a superb collection of Tri-ang buses and lorries on the stage.

The sales stands including one selling mainly Trix, thanks to Dave Best and family, did a brisk trade and Carol Bourne and Penny Drayson deserve a vote of thanks for running the refreshment counter.

We were visited by the local press and some 500 members of the public but where were the TTRCA members? We were pleased to see Denis Baker, Peter Corley and Anthony Eastwood but considering that the venue was served by a main line station and was only a few minutes off the M25 it seems to the organisers that there is little support for a "get-together" in the South East.

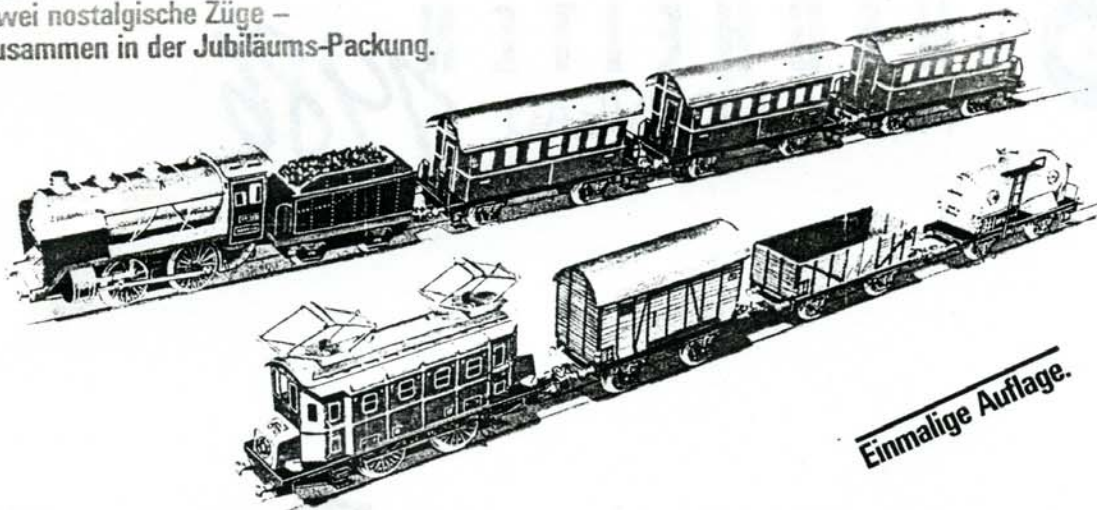
We just broke even on the day and the extra support from members would have ensured a much needed donation to the spares fund.

Martin Drayson.

TRIX EVENTS FOR YOUR DIARY.

KIRTON-IN-LINDSEY, Lincs. Sat. May 17th.
SHIPTON, Nr. York. Sat. June 28th.
HILLMORTON, Rugby. This year on a Saturday Sept. 6th.
SOUTHEND-ON-SEA. 26th - 28th September.

Zum 50. Geburtstag von Märklin HO:
Zwei nostalgische Züge –
zusammen in der Jubiläums-Packung.



märklin
50 Jahre HO

Anlässlich des 50. Geburtstags der beliebtesten Spurweite der Welt fertigt Märklin zwei komplette Züge, die den ersten Fahrzeug-Modellen von 1935 nachempfunden sind. Diese nostalgischen Leckerbissen in Spur HO präsentiert Märklin in einer einmaligen Auflage rechtzeitig zum Weihnachtsfest.

Ferisatzung: 1 Schlepptender-Lokomotive aus Metall (Zweidruckluft und Sandwechslung mit Sandbeheizung), 3 Personenzüge aus Metall mit angelegten Fenstern und Innenverkleidung, Automatische Kupplung, Figuren von Lokführer und Heizer, Zuglänge 87 cm.

Gesamt: 1 elektrische Lokomotive aus Metall (Zweidruckluft und Sandwechslung mit Sandbeheizung), 1 Gepäckwagen, 1 Güterwagen, 1 Kesselwagen mit Aufschrift "Speer", 5 weitere Wagen sind aus Metall, Automatische Kupplung, Zuglänge 43 cm.

Beide Züge sind nur in der einmaligen Jubiläumspackung 0050 erhältlich.

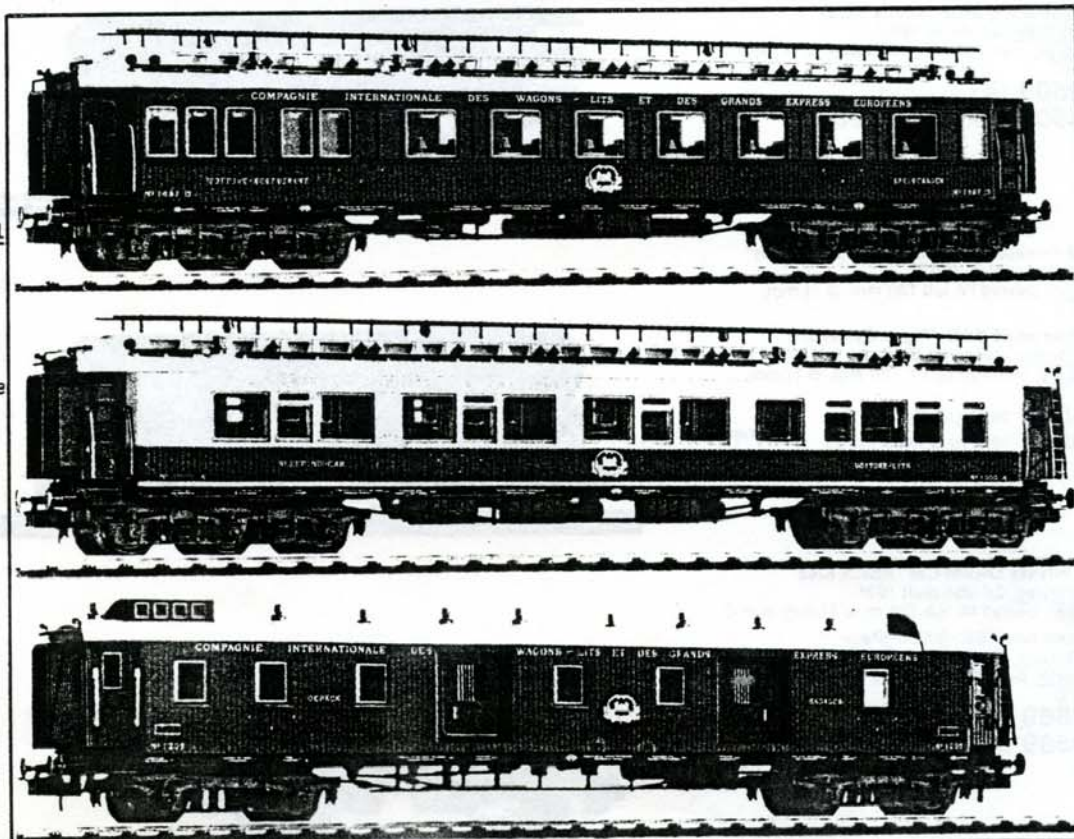
NEW TRIX RELEASES

No! Trix Mangold are not making replica Märklin models. For the benefit of members whose curiosity may have been aroused by Mike Barritt's remark in "Gazette" no. 37, here's what happened: Late in summer 1985 Märklin announced publicly that they would be releasing a "limited edition" train set to commemorate the 50ies anniversary of their OO/HO gauge model railway. Märklin have been following this "order-now-or-be-damned-forever" routine for a couple of years now, offering re-decorated models from their current range in attempt to increase their turnover by selling two or more basically identical models to the completomaniac collector. This time, however, they made something really special, namely reproductions of their very first tinplate R 700 0-4-0 tender loco and RS 700 0-4-0 electric loco of 1935 vintage, albeit with new mechanisms, and matching tinplate rolling stock (see illustration above). The (double-) sets, cat.no. 0050, reached the shops in Germany in time for Christmas in December last year. All items were marked "Märklin 50 Jahre-HO" on the underside so that they could not be confused with their antique predecessors.

With Märklin making so much ado about their OO/HO jubilee it's a pity that Trix, who launched their Express system half a year earlier and with an ancestor like Bing might even have justly celebrated the diamond jubilee of the first OO gauge electric table railway, did nothing to attract any particular publicity. They did, however, release their long awaited "Orient Express" coaches for HO scale in November. These are magnificent models (see illustration) with plenty of character and lots of detail including interior lighting, available for Trix Express and International as well as the Märklin 3-rail system. The model railway press, always keen on looking for snags, criticized the lack of standard close-coupling adaptors now familiar with Roco, Liliput and Fleischmann models, and one serious modeller angrily wrote that this was the reason why he would never ever purchase any of the coaches. If I only had his problems! Me too, I will never be able to buy them, but only for the reason that I can't afford to, each one costing about £ 25 ! I wonder where this is all going to end?

Meanwhile, Trix have announced their new releases for 1986 at the Nürnberg Toy Fair held at the beginning of February (see next page). New items for N gauge will be an S 2/5 4-4-2 express tender loco in Bavarian State Railways lined green livery, a tiny DR Class 98 0-4-0 tank loco, some old time goods wagons (of which the "Libby's" and "Lederer" vans will also be available for HO), plus livery variations of existing models. The only totally new introductions for HO scale will be three bogie express coaches in smart Bavarian State Railways livery (first shown for N gauge at the previous fair) fitted with standard close-coupling adaptors at last. Judging from Trix's 1986 news leaflet, the cat.nos. for the whole range will be changed this year.

Jan P. Schniebel Feb86



TRIX HO

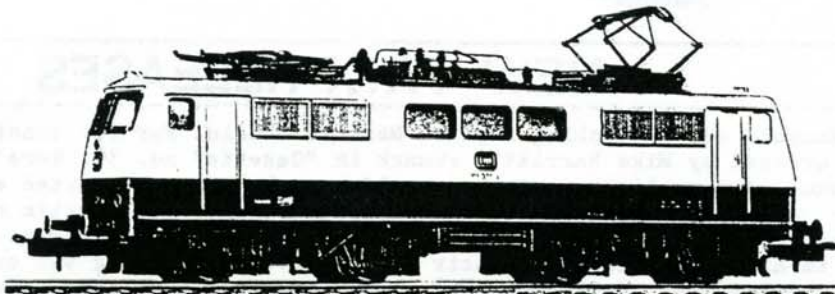
NEUHEITEN

NEW - NOUVEAU 1986

DB Electric Locomotive 111
Prototype: Bo'Bo' built 1975.
Modèle: période IV, 2-axe-drive, 4 traction tyres, driver's cab with interior fittings, l.t. 193 mm

Locomotive électrique DB 111
Prototype: Bo'Bo' construit 1975.
Modèle: période IV, 2 essieux moteurs, 4 bandages d'adhérence. Cabine de pilotage avec aménagement intérieur, l.t. 193 mm

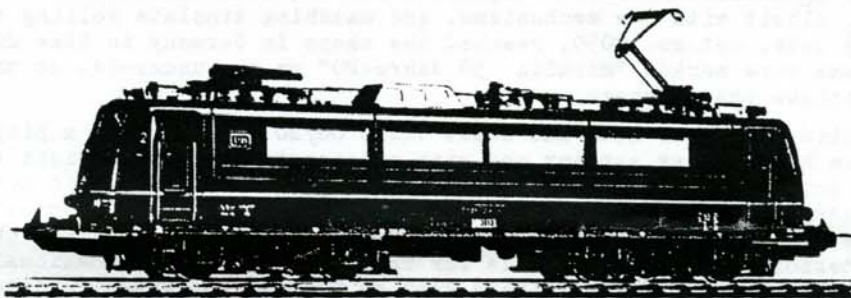
32353 TRIX EXPRESS
22553 TRIX INTERNATIONAL summer/été 86



DB Electric Locomotive 181
Prototype: Bo'Bo' built 1966, operates on two different power systems.
Modèle: période IV, 2-axe-drive, 4 traction tyres, l.t. 195 mm

Locomotive électrique DB 181
Prototype: Bo'Bo' construit 1966 pour 2 systèmes d'alimentation différentes.
Modèle: période IV avec pantographes uni-jambistes, 2 essieux moteurs, 4 bandages d'adhérence, l.t. 195 mm

32347 TRIX EXPRESS
22547 TRIX INTERNATIONAL summer/été 86



SBB Private Owner Car "Juracement"
Prototype: built 1967.
Modèle: période IV, l.t. 130 mm, Ø 11 mm, K = C

Wagon privé SBB -Juracement-
Prototype: construit 1967.
Modèle: période IV, l.t. 130 mm, Ø 11 mm, K = C

33508 TRIX EXPRESS
23508 TRIX INTERNATIONAL summer/été 86



SBB Private Owner Car "Vigier Cement"
Prototype: built 1967.
Modèle: période IV, l.t. 130 mm, Ø 11 mm, K = C

Wagon privé SBB -Vigier Cement-
Prototype: construit 1967.
Modèle: période IV, l.t. 130 mm, Ø 11 mm, K = C

33509 TRIX EXPRESS
23509 TRIX INTERNATIONAL summer/été 86



DB Private Owner Car "Rhein-Kies"
Prototype: Ed 084 built 1961.
Modèle: période III, l.t. 105 mm, Ø 11 mm, K = C

Wagon privé DB -Rhein-Kies-
Prototype: Ed 084 construit 1961.
Modèle: période III, l.t. 105 mm, Ø 11 mm, K = C

33569 TRIX EXPRESS
23569 TRIX INTERNATIONAL summer/été 86



T.T.R.C.A. LIST OF AUSTRALIAN & NEW ZEALAND MEMBERS - APRIL 1986.

Representative for Australia & New Zealand:

David Mewes, Harkaway, Victoria 3806, AUSTRALIA.
D.H. Best, North Mount Albert, 3129, Victoria, AUS.
G. Connolly, Norman Hurst, 2076, N.S.W. AUSTRALIA.
Dr. E.C. Mackenzie, Netherby, SOUTH AUSTRALIA, 5062.
Mr A. McKenna, Noble Park, Victoria, 3174, AUSTRALIA.
R.H. Smith, Belrose, Sydney, 208, N.S.W. AUSTRALIA.
R.G. Stanley, West Wyalong, AUSTRALIA 2671.
C.R. Stewien, Torrens Park, SOUTH AUSTRALIA, 5062.
Mike Joyce, Kambah, A.C.T. 2902, AUSTRALIA.
Dr. C.R. Davies, Raumati South, NEW ZEALAND.

T.T.R.C.A. LIST OF CANADIAN & U.S.A. MEMBERS - APRIL 1986.

Representative for Canada:

Alan Markham, Scarborough, Ontario, CANADA,
Dr. B.K. Davis, Scarborough, Ontario, CANADA,
*K. Dombrowski, Thornhill, Ontario, CANADA,
*Reinhold Schuele, e/ONTARIO, LOR 1B0, Lakeshore Rd, CANADA
D. Abineri, Milford, OHIO 45150, U.S.A.
P. Brixey, Plymouth, MA 02360, U.S.A.
W. Helling, Dearborn, Michigan 48124, U.S.A.
Loring C. Roever, Lebanon, ILLINOIS 62254, U.S.A.
C.J. Sabol, Grosse Pointe Farms, Michigan 48236, U.S.A.
R.J. Urmston, Jr., Smoke Rise Kinnelon, New Jersey, U.S.A.
A. Wendt, Elmhurst, Illinois 60126, U.S.A.

T.T.R.C.A. LIST OF EUROPEAN MEMBERS - APRIL 1986.

Dr. G.A. Maugin, 75013 PARIS, FRANCE.
K. Baetke, KARLSRUHE, 1, W. GERMANY.
Dr. Flatow, LUEBECK, GERMANY.
C. Nibbes, HAMBURG, 52, W. GERMANY.
F. Nowack, W. GERMANY.
J.P. Schniebel, HAMBURG 50, W. GERMANY.
C. Van Dyk, OVERBERG, HOLLAND.
E.W. Kegge, DELFT, NETHERLANDS.
I. Wybrew-Bond, Van Hogenhoucklaan, DEN HAAG, N*lands.
*Henri Marthaler, 2740 MOUTLER, SWITZERLAND.
*New Members.

T.T.R.C.A. LIST OF UNITED KINGDOM NEW MEMBERS - APRIL 1986.

J. Appleton, CONSETT, Co. Durham,
D. Bell, SOUTH SHIELDS, Tyne and Wear,
L. Bennett, Eldwick, BINGLEY, West Yorkshire,
B.T. Bibby, Moorgate, ROTHERHAM, South Yorks.
J.J. Bowden, Brickhill, BEDFORD,
J.C. Brown, Shirley, SOLIHULL, West Midlands,
J. Carpenter, BISHOPS STORTFORD, Herts,
K. Carr, SCARBOROUGH, North Yorkshire,
F.J. Chilmaid, Canford Cliffs, POOLE,
Dorset,
G.C. Corkram, NORTHAMPTON,
K.G. Culverhouse, RETFORD, Notts,
P. Davison, Tyne and Wear,
R.A. Edney, Unit, ADDLESTONE, Surrey,
C. Kelley, CONSETT, Co. Durham,
E. Lane, SHREWSBURY, Shropshire,
E.W. Large, LETCHWORTH, Herts,
E.D. Lewis, Norton, STOCKTON-ON-TEES, Cleveland.
B. Morgan, Pennington, LYMINGTON, Hants,

T.T.R.C.A. LIST OF UNITED KINGDOM NEW MEMBERS - APRIL 1986.

T.Robbins, , ASHFORD, Kent.
R.D.N.Salisbury, SIDMOUTH, Devon,
D.Small, Leicester, LE2 4NT.(membership re-newal)
D.Starkey, RUGBY,
W.Symington, Hedge End, SOUTHAMPTON,
Dr.D.N.Whitmore, BEXLEY, Kent,
P.J.Walker, FARNBOROUGH, Hants,
G.S.Ward, HORSHAM, West Sussex,

A D V E R T I S E M E N T S

FOR SALE - Mint Trix and Liliput plastic Wagons. All are boxed (yellow and black for Trix) unless stated. 3 Trix tank wagons, Esso, Mobil and Total £2 each. 1 Trix speedfreight cont.wagon £1.50. 4 Trix bulk grain wagons, Jamie Stuart, White Horse, Haig and plain £2.50 each. 6 Liliput bulk grain, Jamie Stuart, White Horse, Crawfords, Dewars, Abbots Choice and plain £2 each. 1 Liliput P.O.wagon Isaac Wilkinson £1.50. 2 Trix P.O. wagons Abbott and Hall & Co. No boxes £1 each. Mint & boxed 3-rail Hornby Dublo Bristol Castle £22.

John Appleton, Lane, Consett, Co. Durham, DH8 7AD.
Tel: Consett

FOR SALE - Large collection of Trix Twin:
Coal Conveyor, Manyways Station, Four Locos, including "Pacific", American and British coaches, various items of goods rolling stock, switches and controls plus lots of track. £250 for the complete collection (as a lot).

J.S. Pigg, , ORSETT, Essex.

FOR SALE - Small quantity of Trix Bakelite Track 410/1 Curved & 420/1 Straight. Mrs J. Curran. Tel: (Dorking, Surrey)

FOR SALE - Trix Weltrol Black or Grey £2 each, Transformer Weltrol £3.50 Cable Weltrol £3.50, Boiler Weltrol £3.00, Charrington P.O. wagons £2 each (5 off), Scale length BR maroon brake £3.50. All plus postage.

WANTED - TRIX EXPRESS Tinplate Goods Vehicles, Covered Vans and 20/78 series Tankers. P. Hislop. Tel: 0788 -

WANTED - E.M.1. Bo-Bo motor bogie with motor.

G.Ward, HORSHAM, Tel: 0403 -

WANTED - Trix Catenary, even oddments.

Ian Paterson, Scunthorpe, S.Humberside,

WANTED - To complete layout, Bakelite track: 4 L.H. and 3 R.H. post-war remote points plus 2 remote uncoupling rails with switches. All must be complete and in perfect working order.

David Salisbury, Sidmouth, Devon,
Tel: 039

WANTED - 3 only L.H. and 3 R.H. Universal type Trix 3-rail fibre base points (preferably electric).

R.H.Body, PLYMSTOCK, Plymouth, Devon.
Tel: 0752-

FOR SALE - Trix Bogie Timber wagon (673) £2.50. Bogie High Cap. (676) £2.50. Open wagon-high (634) (Changed axles) ? Tank wagon-Shell (644) £2. Also I have several early editions of the TTRCA Gazette which I do not intend to destroy: Nos. 22 to 32 and No. 34. Also No. 33 if I can trace it. Anyone interested please contact me through the post.

G.R. Yeatman, , Parkstone, Poole, Dorset,
(Former Member: 216).

9th FESTIVAL OF MODEL RAILWAYS AT GRAVESEND.

There is to be a special area for Vintage Model Railway layouts at this year's exhibition which will include Hornby '0' gauge, Hornby Dublo, Tri-anq 'TT' gauge and Trix Twin, the latter being owned and operated by your Editor. The exhibition is being held on the 24th, 25th & 26th May (Spring Bank Holiday) at the Woodville Halls Civic Centre, Windmill Street, Gravesend, Kent. Admission: Adults £2, Children & O.A.Ps £1.50. Family Tickets (2 adults & 2 children) £6. Open Daily 10am - 6pm. I hope some of our southern members will be able to come along.

I was interested to see Don Crocker's useful tabulation of screw threads, which largely applies to a.c. locos, in gazette no. 39.

Don also raises several queries which I hope I can answer, and also expand on the information given.

Soon after joining the Association I spent some time trying to establish the type of thread used on Trix Express and TTR locos from 1935-1957 and still later on certain locos. Careful measurements and reference to "Machinery's Handbook" led me to conclude incorrectly that Löwenherz, a German instrument thread was the answer. I am grateful to Tony Matthewman for pointing out that threads used by Trix are in fact German Metric Series, The range of diameters in the area of concern to us is the same in both cases, but the angle is 60° compared to 53°8' for Löwenherz.

These threads, along with our B.A. sizes are eventually to be replaced by I.S.O. metric coarse threads which are readily available. However, just as B.A. screws are still quite common in Britain, so German Metric are apparently still available in Germany. All we have to do is get some!

The commonest size used by Trix on a.c. locos is 2.6 followed by 2.0 and 1.7mm. The most readily available replacements in the U.K. are M2.5 and M2 I.S.O. metric & 10B.A. respectively. It must be stressed that the M2.5 is about 4 thou' undersize and **MUST NOT BE OVERTIGHTENED IF STRIPPED THREADS ARE TO BE AVOIDED.** Taps and dies for these are available from modelmakers suppliers and are near enough to cure minor thread problems. I can supply addresses of two companies in London who can help with the obscure 2.6mm taps and dies.

On an 0-4-0 chassis all threads are 2.6mm except for the reversing arm screw. Con-rod bolts are 2.0mm and shouldered screw for the PECO type front and rear couplings is 1.7mm. The latter is best replaced from a scrapped CADET loco which has two.

For 2-rail enthusiasts the most widely used screw seems to be the No.2 panhead self tapper which is used in various lengths from 1/8" to 3/8" on both plastic rolling stock and Trix/Liliput plastic-bodied locos.

B.A. screws are available from good model shops, but to assist members, the screws in the following table are generally available via Allan Hinchliffe, either individually or sometimes assorted. N.B. For the reasons stated above M2.5 will be replaced by 2.6mm as soon as it is possible to locate a supplier. Any help from our Continental members would be gratefully received!

Screws available from T.T.R.C.A.

SIZE / HEAD	APPLICATIONS EXAMPLES
M2 x 6 CSK	20/56 LOCO BODY + COLLECTOR SHOES a.c. PACIFIC LOCOS (SCOTSMAN etc.) CAB TO CHASSIS
M2 x 8 ROUND	CON RODS (File down to 7 mm. and if needed make a 2 mm. grub screw as depth stop) 4-4-0 COLLECTOR SHOES (Cut down to 2.5 mm.)
M2.5 x 5 CSK	0-4-0 TENDER LOCOS, REAR BODY TO CHASSIS. CENTRE COLLECTOR SHOES COVER.
M2.5 x 6 PAN	SIDE COLLECTOR SHOES (Cut to 5 mm. if necessary)
M2.5 x 8 PAN	REVERSING MAGNET.
M2.5 x 8 PAN SPECIAL	REDUCTION GEAR PINION.
M2.5 x 10CSK	4-4-0 TENDER LOCOS, REAR BODY TO CHASSIS.
M2.5 x 16 CSK	AMERICAN LOCOS, REAR BODY TO CHASSIS.
No.2 x 1/8" PAN S/T	COUPLING HOOK ON PLASTIC P.O. WAGONS.
No.2 x 3/16" PAN S/T	COUPLING HOOK ON SCALE COACHES.
No.2 x 1/4" PAN S/T	BOGIE TO PLASTIC SCALE COACH BODY.
No.2 x 3/8" PAN S/T	MISCELLANEOUS INCL. PLASTIC BODIED '2-RAIL' LOCOS.
<u>Screws NOT available from T.T.R.C.A.</u>	
10 B.A. x 1/4" CH	COUPLING HOOKS ON a.c. LOCO BODIES.
8 B.A. x 1/8" CSK	4-4-0 TENDER AXLE RETAINING PLATES.
6 B.A. x 1/4" CH	'METEOR' UNDERFRAME TO BODY.

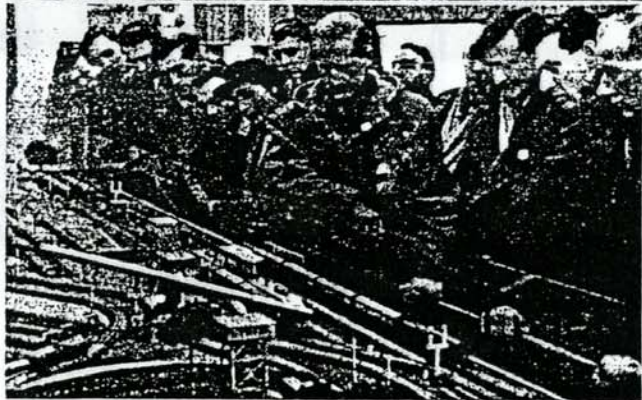
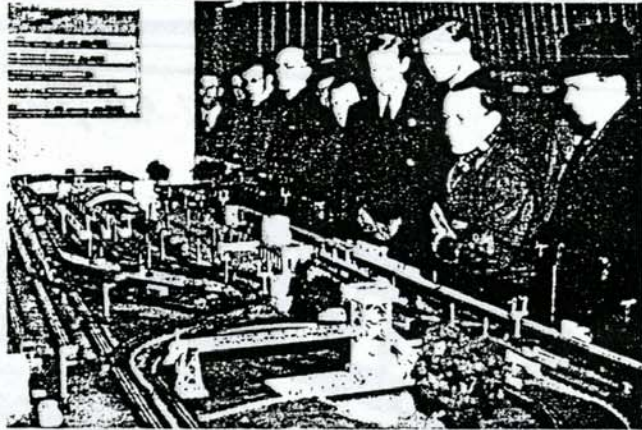
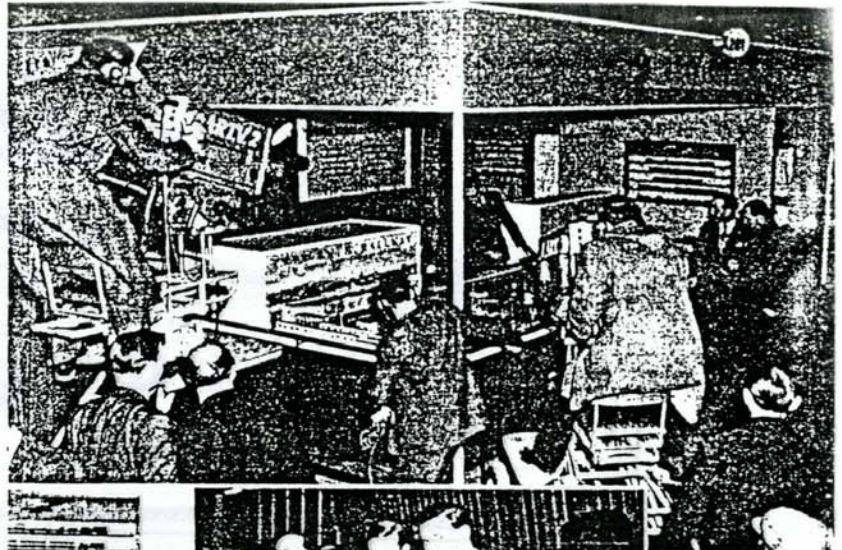
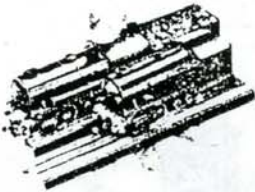
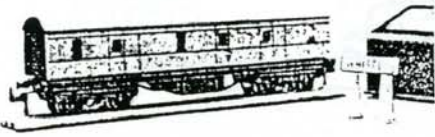
N.B. lengths are thread only except for CSK head where length is overall.

TTR



No 276

Train Whistle Set



TRIX AT THE B.I.F.

Highlight of our Stand at the 1956 British Industries Fair was the 18' x 8' scenic layout—a centre of attraction for all visitors to the Fair, and the star feature in a special I.T.V. live transmission pictured above. The rapt attention evident in the lower photographs shows the enormous interest created by this TTR "All Action" layout.

PATENT NO. 459744



MADE IN ENGLAND

STRAIGHT

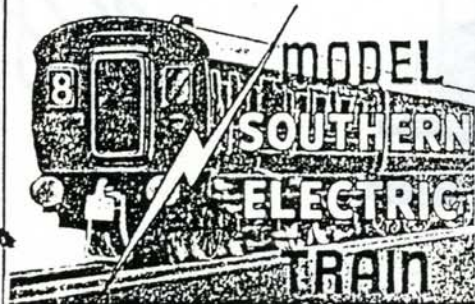
ON BAKELITE BASES

RAILS

PERFECT INSULATION

CONNECTING DEVICE ENTIRELY NEW.

THE TWIN TRAINS

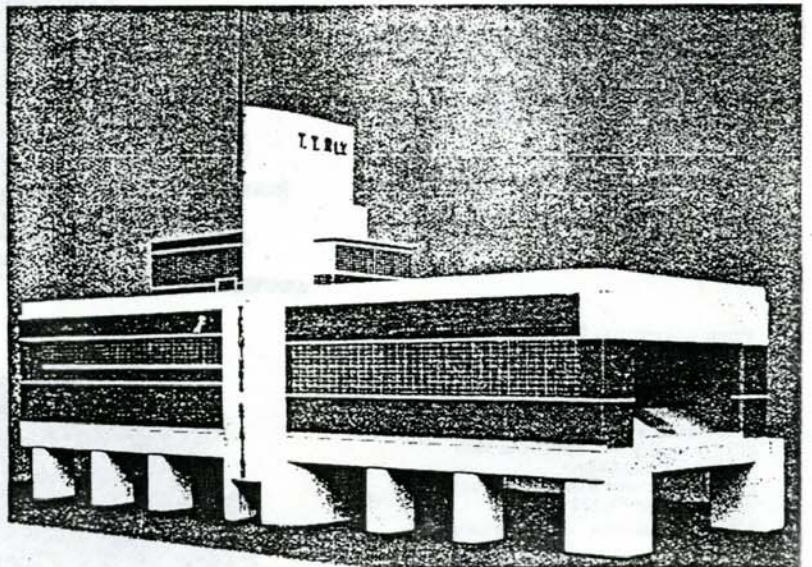


The amazing popularity of the "00" gauge TWIN TRAINS in England has prompted BASSETT-LOWKE to produce a real "scale model" for this series, and in collaboration with the Southern Railway, this has now been placed on the market.

The outfit consists of a Third-Class Model Motor Coach working off 14 volts A.C. or 12 volts D.C., two bogie Coaches (First-class Corridor and Brake Third) Oval of Track, Controller with automatic cut-out, Connections and Instruction Book.

Official Southern Railway Model Set, price \$5 -.

For further details of the TWIN TRAINS write for Booklet T.T. 490.

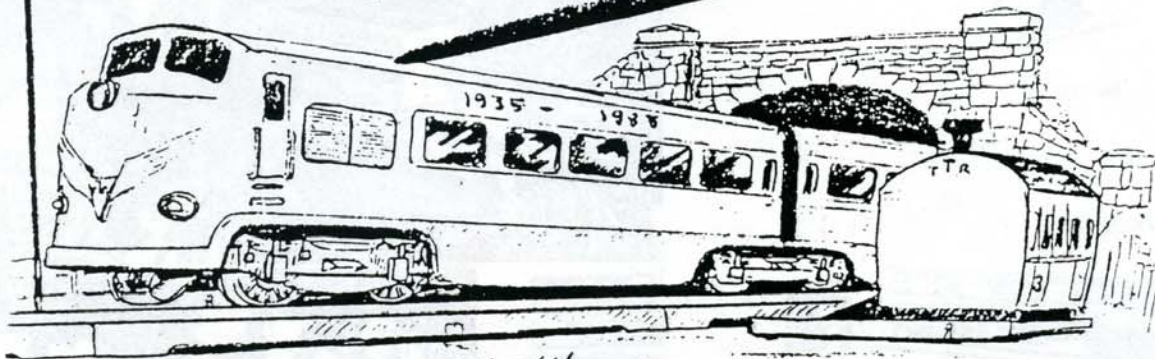


Messrs. Bassett-Lowke's new "00" gauge Terminal Station



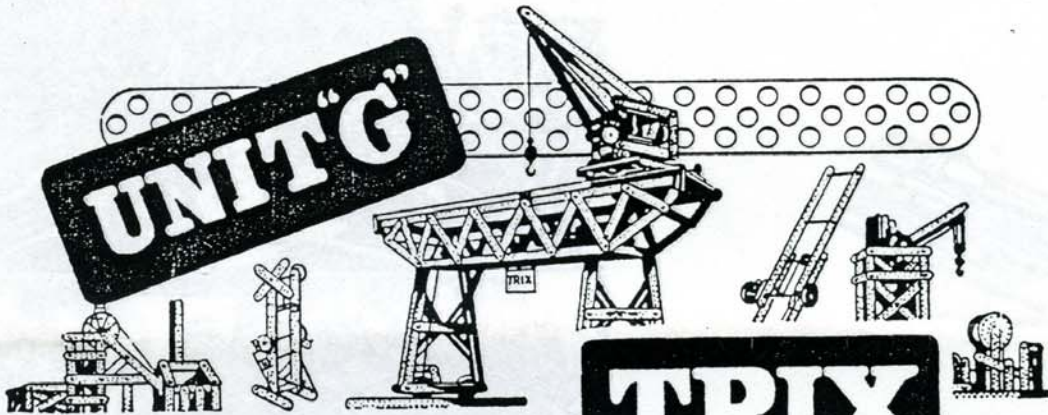
TRIX TWIN RAILWAY

Still designed
for **Action!**



B. A. Kelley '85

UNIT "G"



TRIX
MADE IN ENGLAND

BRITISH PATENTS 363547 413963 421921
421924 539851
PATENTED ABROAD

ALWAYS COMPLETE — NEVER FINISHED

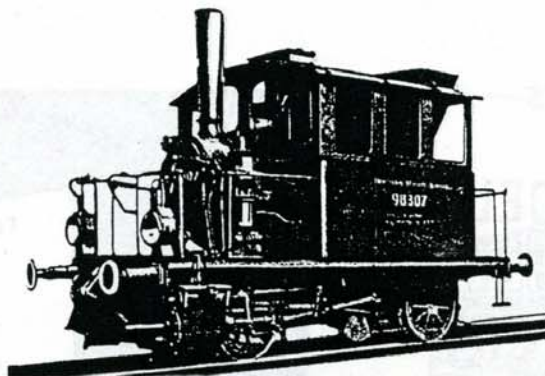
MINITRIX

1986

DR Steam Locomotive BR 98³
Prototype: Bh2 built 1908/9
for "K. Bay St. Bn."

Locomotive à vapeur DR, type BR 98³
Prototype: Bh2 construit 1908/9
pour les "K. Bay St. Bn."

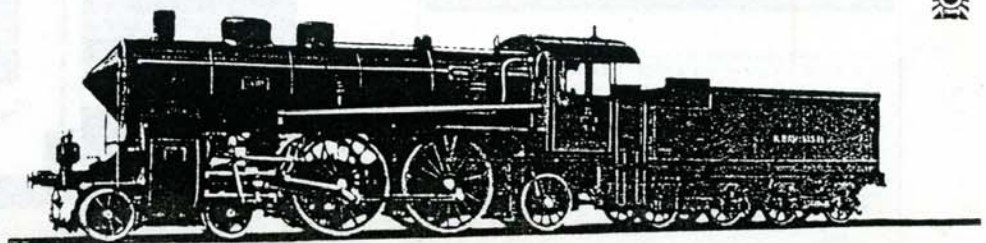
Modèle: période III, l. t. 45 mm
12015 MINITRIX autumn/automne 86



Steam Locomotive S 2/5
Prototype: 2'B 1n4v built 1903
for "K. Bay St. Bn."

Locomotive à vapeur S 2/5
Prototype: 2'B 1n4v construite 1903
pour les "K. Bay St. Bn."

Modèle: période I, 6 bandages d'adhérence,
tender moteur l. t. 123 mm
12035 MINITRIX summer/été 86

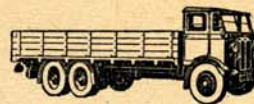


ASH PRODUCTS LEISTON, SUFFOLK



H.V.2

ROAD TRANSPORT MODEL KITS



H.S.4

The Road Transport 4 m.m. "00" Gauge Scale Model Kits listed below are all supplied in kit form and contain everything necessary for building an exact and attractive model. All parts are accurately machined and designed for quick assembly. No tools are required. The kit contains easy to follow plan, sandpaper, completed cab, wheels, mudguards, body, etc. Kits are educational and make an ideal gift. If you possess an "00" gauge model railway Dublo, Trix, Triang, etc., you will find extra interest in making these fine little models to add to your collection

PRICES OF KITS (incl. P. Tax)

Platform Lorries				Luton Vans			
Code	Length in m.m.		Price	Code	Length in m.m.		Price
P.1	74	4-wheeler	6/-	L.1	104	4-wheeler	9/3
P.2	90	4 "	6/6	L.2	116	6 "	10/-
P.3	104	4 "	7/6	L.3	116	8 "	10/9
P.4	116	6 "	8/4				
P.5	115	9 "	9/-				
High Sided Lorries				Removal Vans			
H.S.1	74	4 "	6/10	R.V.1	104	4 "	10/-
H.S.2	90	4 "	7/6	R.V.2	116	6 "	11/8
H.S.3	104	4 "	8/-	R.V.3	116	8 "	12/6
H.S.4	116	6 "	9/3				
H.S.5	116	8 "	9/10	Petrol Tankers			
				P.T.1	95	4 "	10/4
				P.T.2	110	4 "	11/8
				P.T.3	120	8 "	12/6
Heavy Vans				Liquid Bulk Tankers			
H.V.1	90	4 "	8/4	L.B.T.1	104	4 "	9/-
H.V.2	104	4 "	9/-	L.B.T.2	116	6 "	9/10
H.V.3	116	6 "	9/10	L.B.T.3	116	8 "	10/9
H.V.4	116	8 "	10/-				
Cattle Trucks				Single Decker Bus			
C.T.1	104	4 "	10/-	Complete with seats, plywood cut-out sides, windows, sliding door, wheels, plan, glue, etc. 12/6			
C.T.2	116	6 "	11/4				
C.T.3	116	8 "	11/11	Double Decker Bus			
Low Loaders				Complete with top and bottom seats, plywood cut-out sides, windows, stairs, wheels, plan, glue, etc. 16/9			
L.L.1	151	6 "	9/6				
L.L.2	169	6 "	10/4				
Articulated Vans							
A.V.1	151	8 "	11/8				
A.V.2	169	8 "	13/2				

PRICES OF LOADS (all "00" Gauge)

Loads are NOT included in kits, but can be bought separately

No. 6	Wood load....	1/9	No. 7	Crates, Set of 6 sizes	2/4
No. 8	Set of 12 milk churns	1/6		No. 19	Tar and oil barrels set of 12 2/6
No. 18	Cable drums (unlagged)	2 in box	2/-	C2	Imitation coal9d pkt
No. 32	" " (lagged)	2 in box	2/-	No. 33	Esso oil drums 6 in box	2/6

SPARES AND ACCESSORIES (all "00" Gauge)

S.1	Package containing 7 wheels, petrol tank and cap, tool box, exhaust and wire, 2 axles,	3/-	S.3	Chassis (104 m.m. only) 6 body-bearers, mudguards and mudguard locators,	2/4
-----	--	-----	-----	--	-----

The items listed above can be used to make up the Six Ton Chassis and individual bodywork fitted.

We advise modellers to purchase one of our kits first before ordering spare parts

FOR SPORT AND CLUB BADGES: Send 3d. stamp for catalogue